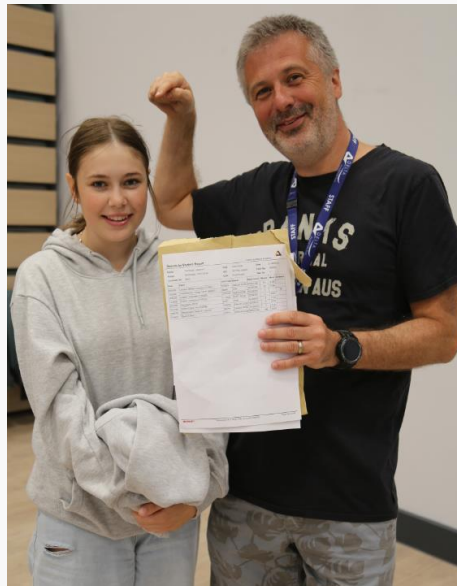


# Working together to achieve exceptional outcomes

# Outstanding Results! #ProudofCLW

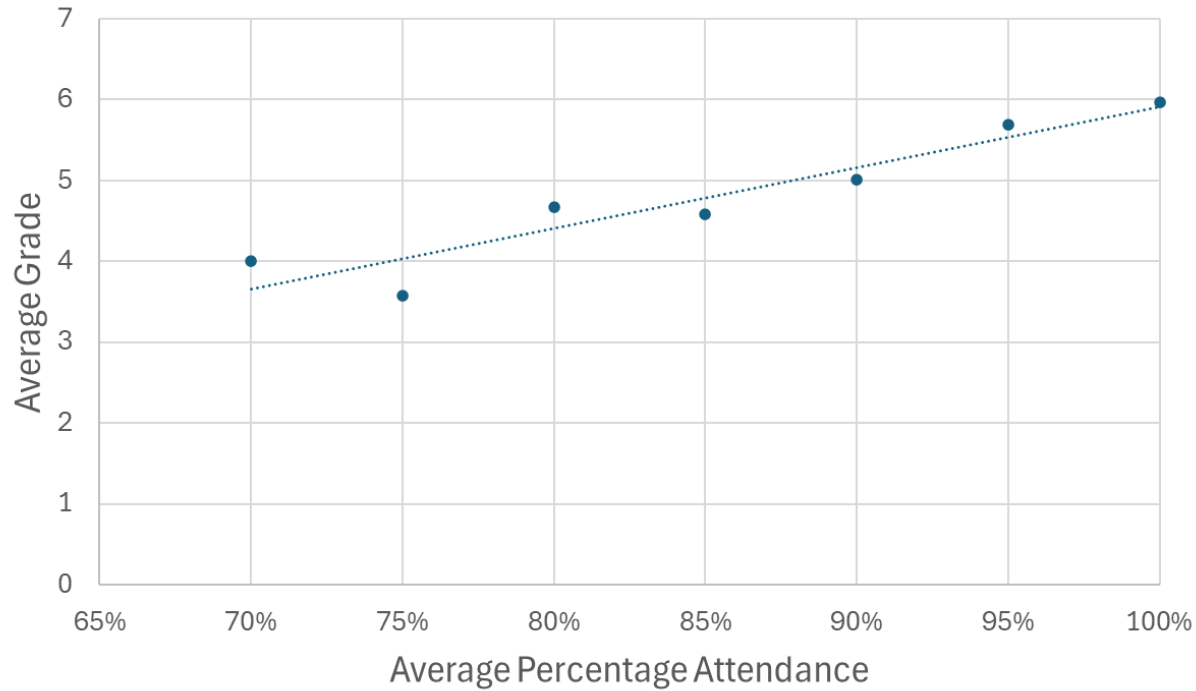
Performance measure	CLW	National
Progress 8 score	+0.51 Well above average	0.00
English and Maths 4+	78%	63%
English and Maths 5+	60%	45%
Maths 4+	82%	72%
English 4+	89%	75%
English 7+	39%	18%



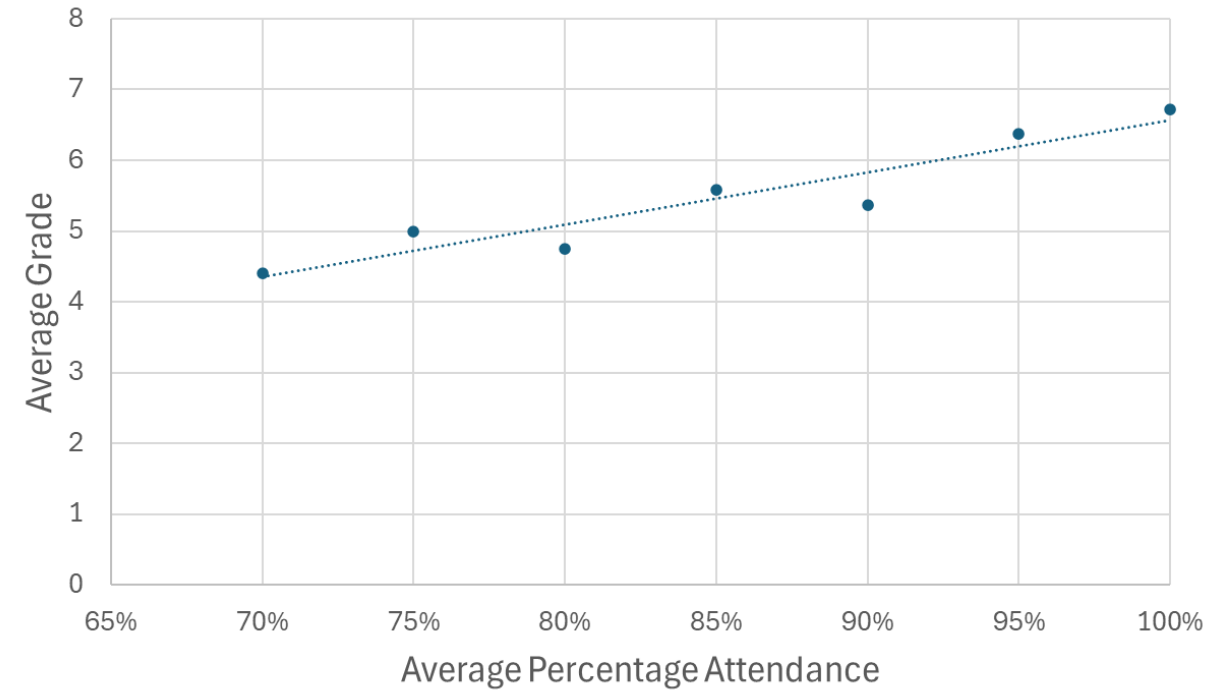
...Changing lives

# Attendance is vital

Average Maths Grade V Attendance



Average English Grade V Attendance



# Question Level Analysis

TARGET GRADE: 7

**Trial ONE**  
[June C1/October C2]

## Component One - [June C1 Y10]

Reading /40	19
Narrative /40	18
Overall for C1 /80	37
Notional Grade	4

## Component Two - [October C2 Y11]

Reading /40	25
Transactional /40	18
Overall for C2 / 80	43
Notional Grade	5

## Overall

Overall mark /200 [C2 mark times 1.5 weighted]	102
Notional Overall GCSE Grade	5

2024 Boundaries	Overall	Component one	Component two (x1.5)
Max	200	80	80
Grade 9	150	60	60
Grade 8	138	55	55
Grade 7	126	51	50
Grade 6	112	46	44
Grade 5	98	39	39
Grade 4	84	33	34
Grade 3	64	26	25
Grade 2	44	18	17
Grade 1	24	10	9

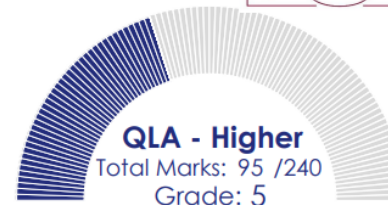
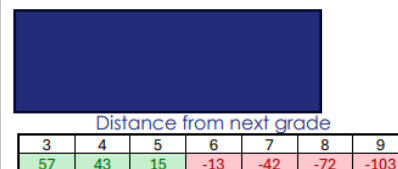
## Progress June to October:

How many marks did you improve overall?

6

Talk to your English teacher about your next steps!

## Assessment 1



### Paper 1 Score: 32/80

#### Strengths

Probability from a table	100%
Relative frequency	100%
Recipe problems (amount of an ingredient)	100%
Recipe problems (Buying ingredients)	100%
Highest common factor of two numbers	100%

#### Areas for Improvement

	Sparx	Revision Type	Date	Done
Share in a given ratio (Worded Problem)	0%	U577		
Perimeter & Area Combined Problem	0%	U993		
Estimate calculations involving square roots	0%	M878		
Solving simultaneous equations graphically	0%	U836		
Compare medians (Reasoning)	0%	U456		

### Paper 2 Score: 31/80

#### Strengths

Displaying sets in Venn diagrams	100%
Draw a frequency polygon	100%
Critique time series charts (Reasoning)	100%
Angles in polygons involving Proportion (PS)	100%
Complex calculations using a calculator	100%

#### Areas for Improvement

	Sparx	Revision Type	Date	Done
Probability from Venn Diagram (Intersection)	50%	U476		
Median from grouped frequency tables	0%	U569		
Surface area of a cylinder - painting (PS)	20%	.....		
Reverse percentages (PS)	0%	U286		
Index form (powers of unit fractions) - reasoning	0%	U985		

### Paper 3 Score: 32/80

#### Strengths

Draw straight line graph	100%
Stratified Sampling	100%
Right-angled trigonometry (find side)	100%
Share in a given ratio worded problem	100%
Ordinary to standard form	100%

#### Areas for Improvement

	Sparx	Revision Type	Date	Done
Solve linear inequalities (x both sides)	50%	U759		
Solve double linear inequalities and represent on a number line	0%	U145		
Census, sampling & bias - reasoning	0%	U162		
Volume of a cuboid (PS)	50%	U786		
Error intervals - truncation	0%	U657		

### Other useful Revision Resources

[Corbettmaths - Videos, worksheets, 5-a-day and much more](#)

[Maths Genie - Free Online GCSE and A Level Maths Revision](#)

[Maths Teacher Hub](#)

[Delta Guide to Learning](#)

[GCSE MATHS TAKEAWAY - keshmathstakeaway.wordpress.com](#)

[Half Past Papers \(hannahkettlemaths.co.uk\)](#)



## English Literature and Language GCSE – Eduqas

- **GCSE Pod** - Quick fire revision of key content with self-testing.
- **Cue Card** - Create physical and/or digital cue cards for the key quotes in every text for self-testing and memory.
- **The Narrative** - Regularly discuss and re-plan the narrative from memory.
- **Language work booklet** - Students will receive a past paper booklet – complete a paper a week to the timings.
- **Intervention** on a Thursday after school

## Maths GCSE – Edexcel

- **10 Topics To Smash Sticker** these are topics your teacher would like you to work on before the next trials
- **Maths Genie** topics are split by target grade so pupils can fix their gaps by watching the videos then practice using exam questions and worked solutions
- **HannahkettleMaths.com** live past paper video walkthroughs with full explanations and reference to mark schemes
- **Intervention** on a Friday after school

# Important Dates

<b>Date</b>	<b>Event</b>
<b>18<sup>th</sup> Nov – 13<sup>th</sup> Dec</b>	2 <sup>nd</sup> Trial Examinations in all examination subjects
<b>Thursday 16<sup>th</sup> Jan</b>	Y11 Parents Evening
<b>3<sup>rd</sup> March – 14<sup>th</sup> Mar</b>	3 <sup>rd</sup> Trial Examinations in all examination subjects
<b>7<sup>th</sup> - 17<sup>th</sup> April</b>	Easter Revision Programme
<b>6<sup>th</sup> May – 27<sup>th</sup> June</b>	<b>2025 GCSE examinations</b>

# Effective Revision

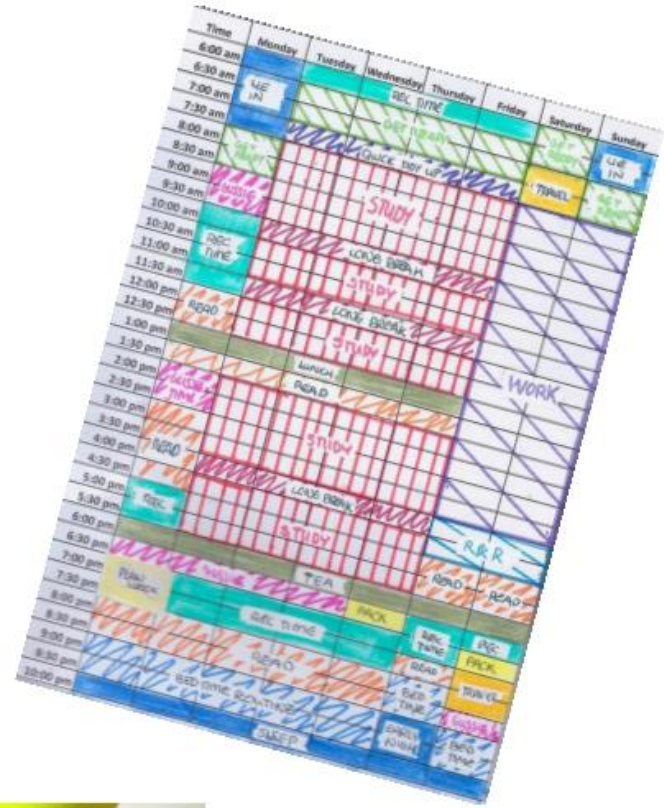


- Revision guides
- Sparx
- BBC bitesize
- Sprachenut
- GCSEPod
- Oak National Academy
- Past Papers
- Attend Intervention
- Regular Revision

# WHAT DOESN'T WORK

If your child is doing any of these things, they may be wasting their time!

- Colour coding revision timetables and highlighting notes
- Staring at books or re-reading your notes
- Doing anything to avoid revision (procrastinating)
- Revising when they should be **sleeping!**





# How Can Parents Support?

- Choose a place in the house to revise where they won't be distracted
- Offer small 'rewards' after every revision session. Nothing extravagant, just a small treat to help them to get back to their books
- Ensure that your child avoids last-minute revision the night before. Instead, support them to complete their revision plan early
- Ensure your child attends school every day if possible. Even one lesson missed means that key information could be missing regarding coursework/deadlines.
- Help students set targets of what they want to learn. There is no point sitting in a room for hours on end – take regular breaks
- PHONES!!!!

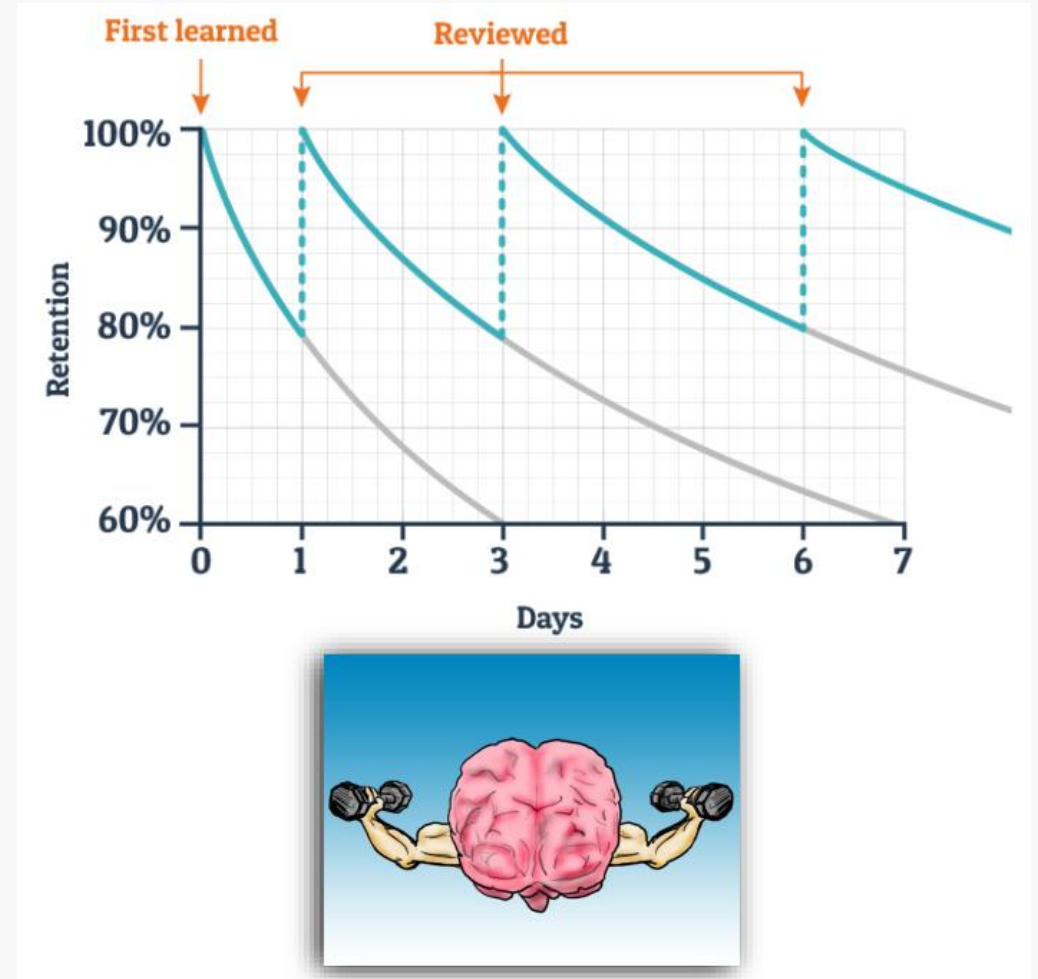
# How Can Parents Support?

---

- Test them on Literature content: key quotations and plot.
- Talk through their narrative ideas together – learn it with them.
- Ensure they complete Sparx before Friday – and then do the XP Boost
- Make them do some Maths every day, practice will ensure confidence
- Facilitate them sitting practice papers and checking the solutions afterwards
- Praise and encouragement.
- Attend intervention 4 Nights a week
- Holiday Revision Sessions

# What Happens When You Revise?

- Know more
- Be more confident
- Your brain will literally grow!
- Enjoy your learning even more!



- Use all of the information and ideas from today to create your own revision wall!







# Carlton le Willows Sixth Form Open Evening 2024

# What makes our Sixth Form excellent?

---

- Supportive learning environment
- Students have positive attitudes to their learning
- Students develop, not just academically, but for life beyond Sixth Form
- Students are supported in making decisions about their future through links with local employers, universities and careers advisors
- Broad range of A-levels subjects available to study
- Excellent teaching and exam results



**19 % of A level grades at A\*-  
A**  
**71% of A level grades at A\*-  
C**

# It's about more than academic success...

- Personal development programme
- Student Role
  - Primary Placement Scheme
- Gold D.of.E
- EPQ
- Student Council
  - Social events
  - Charity work
  - Contribute to the personal development programme
- Careers preparation
  - Links with local universities and employers
  - Work Experience





# What do our students do after Sixth Form?



- A-levels open a lot of doorways...
  - University: 90% got into their **first** choice, with **29%** of those attending Russell group universities
- Apprenticeships (8%)
- Employment (10%)
- Foundation Courses (3%)



# How is Sixth Form different from school?

- A different skill set
  - Organisation/time management
  - Work independently
  - A pro-active and motivated attitude
- Own facilities
- Greater focus on subjects you want to study



...Changing lives

# How do we support our students?



# What can you study?

---

- Study 3 courses
- Some additional subjects to study...

Law

Travel and  
Tourism

Economics

Psychology

Health and  
Social Care

Government and  
Politics

Criminology

...Changing lives



# Entry Requirements

---



- To secure a place in our sixth form you need to have **at least 5 GCSEs grades 9-4** from full GCSE courses, including English and Maths.
- There are **subject specific entry requirements** (Page 9 and 10 of the prospectus)

## What happens if I don't meet the entry requirements?

- Every student will be looked at on an individual basis



# The Application Process



1. Complete the electronic application form by following this link or scanning the QR code. This will ask you for some basic details as well as your most likely subject choices

***Deadline: Friday 3rd January 2025***

<https://forms.office.com/e/4kT7zSJAK7>

2. Interviews will take place in January 2025

3. Letter offering a conditional place

4. Induction week – date to be confirmed once final GCSE exam timetable has been published

5. GCSE Results – **confirm choices online to complete enrolment into Sixth Form**

6. 1 to 1 meetings to discuss options if entry requirements haven't been met.



# Student Council Bake Sale

---

